

WWW.ZARIFCARPETS.COM



TUFTED
CATALOGUE
2026

Tufted Loop & Cut Carpet

ABOUT US

The Apex of Tufting Technology

Your Strategic Partner in High-Performance Flooring

Total Flexibility. No Limits.

We provide a seamless supply chain designed to deliver high-performance flooring to any destination worldwide, exactly when you need it. Our approach is purely results-driven. We manufacture to your specific technical requirements, matching any price point or quality tier your market demands. Whether you are looking for high-volume, cost-efficient solutions or premium, custom engineered designs, our production capacity is fully adaptable to your business model.

Advanced Technology, Tailored to Your Needs

By utilizing state of the art European machinery including German, Belgian, American and, Italian technologies we have removed all technical barriers in carpet production. Our in-house fiber extrusion and advanced printing systems allow us to customize pile height, density, and design with surgical precision. Tell us your target price and your project's technical needs, we have the technology and the integrated supply chain to build the exact product that fits your portfolio.

Tufted Loop & Cut Carpet

CONTENTS

02 About Us

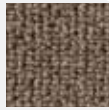
08 Tufted Cut Pile

- 08 Central, Istanbul, Noyan
- 09 Royal Classic, Royal
- 10 Marina, Sydney, Shayli
- 11 Brighton, Hermes, Elehance
- 12 Unique, Nice
- 13 Nahal, Elgoli, Haraz
- 14 Nikan, Raash, Kian
- 15 Hasti, Termo, Kashan
- 16 Violet, Milan, Mana
- 17 Parmis, Melania, Kariz
- 18 Arnik, Elena, Vaj
- 19 Mikhak, Monaco, Nila
- 20 Gucci, Chanel, Prestige
- 21 Venice, Ihan, Avenza

04 Tufted Loop Pile

- 04 Babillon, Milano, Raha
- 05 Aten, Montreal, Toronto
- 06 Paris Plus, Porto, Babillon Pro
- 07 Vegas Pro, Aysu Plus

24 Contact Us

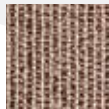
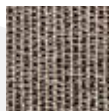
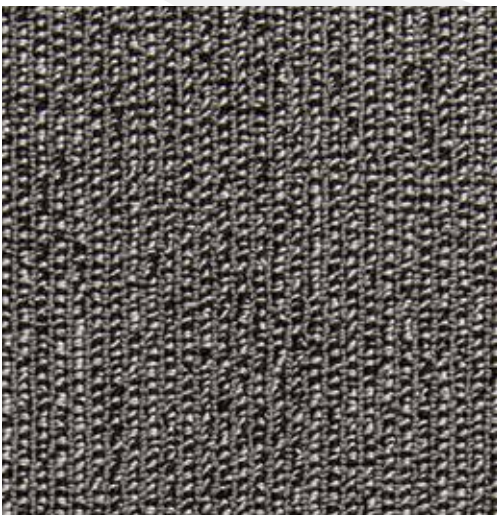


Tufted Loop Carpet
BABILLON



TECHNICAL SPECIFICATION

Structure: Loop
 Pile Material: Polypropylene
 Gauge: 1/10
 Type: Solution Dyed
 Pile High: 4±0.5 mm
 Pile Weight: 290±50 gr/m2
 Total Weight: 1300±50 gr/m2
 Total Thickness: 6-7±0.5 mm
 Width: Up to 400 cm



Tufted Loop Carpet
MILANO



TECHNICAL SPECIFICATION

Structure: Loop
 Pile Material: Polypropylene
 Gauge: 1/10
 Type: Solution Dyed
 Pile High: 4±0.5 mm
 Pile Weight: 400±50 gr/m2
 Total Weight: 1600±50 gr/m2
 Total Thickness: 7-8±0.5 mm
 Width: Up to 400 cm

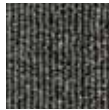
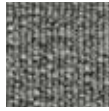
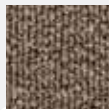


Tufted Loop Carpet
RAHA



TECHNICAL SPECIFICATION

Structure: Loop
 Pile Material: Polypropylene
 Gauge: 1/10
 Type: Solution Dyed
 Pile High: 4±0.5 mm
 Pile Weight: 400±50 gr/m2
 Total Weight: 1600±50 gr/m2
 Total Thickness: 7-8±0.5 mm
 Width: Up to 400 cm



Tufted Loop Carpet
ATEN



TECHNICAL SPECIFICATION

Structure: Loop

Pile Material: Polypropylene

Gauge: 1/10

Type: Solution Dyed

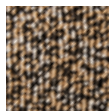
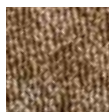
Pile High: 4±0.5 mm

Pile Weight: 530±50 gr/m²

Total Weight: 1750±50 gr/m²

Total Thickness: 7-8±0.5 mm

Width: Up to 400 cm



Tufted Loop Carpet
MONTREAL



TECHNICAL SPECIFICATION

Structure: Loop

Pile Material: Polypropylene

Gauge: 5/32

Type: Solution Dyed

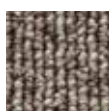
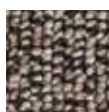
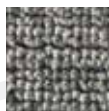
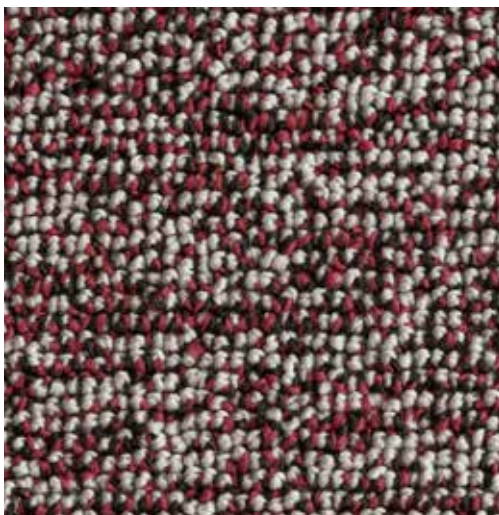
Pile High: 4±0.5 mm

Pile Weight: 680±50 gr/m²

Total Weight: 1975±50 gr/m²

Total Thickness: 8-9±0.5 mm

Width: Up to 400 cm



Tufted Loop Carpet
TORENTO



TECHNICAL SPECIFICATION

Structure: Loop

Pile Material: Polypropylene

Gauge: 5/32

Type: Solution Dyed

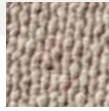
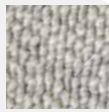
Pile High: 4±0.5 mm

Pile Weight: 750±50 gr/m²

Total Weight: 1950±50 gr/m²

Total Thickness: 8-9±0.5 mm

Width: Up to 400 cm

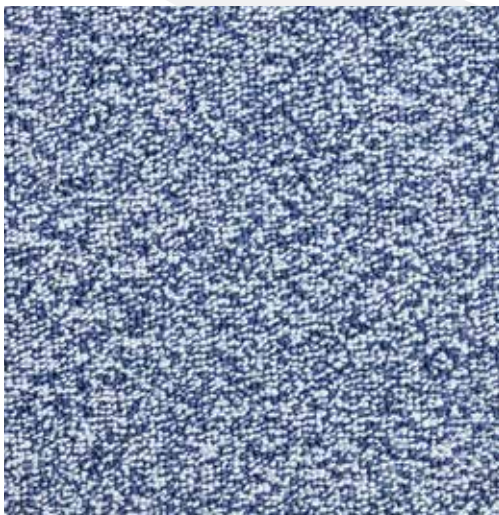


Tufted Loop Carpet
PARIS PLUS



TECHNICAL SPECIFICATION

Structure: Loop
 Pile Material: Polypropylene
 Gauge: 5/16
 Type: Solution Dyed
 Pile High: 6±0.5 mm
 Pile Weight: 700±50 gr/m²
 Total Weight: 1600±50 gr/m²
 Total Thickness: 8-9±0.5 mm
 Width: Up to 400 cm

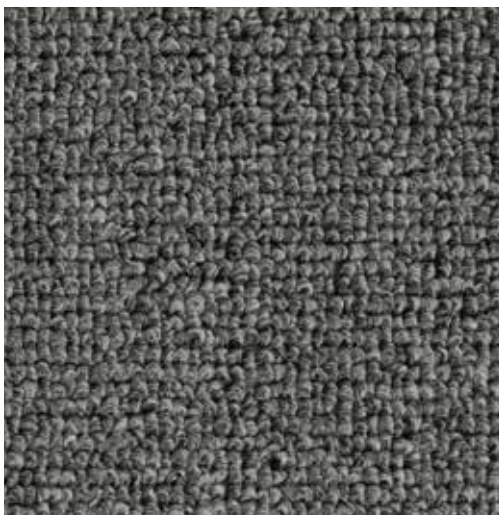


Tufted Loop Carpet
PORTO



TECHNICAL SPECIFICATION

Structure: Loop
 Pile Material: Polyester
 Gauge: 1/10
 Type: Solution Dyed
 Pile High: 4±0.5 mm
 Pile Weight: 290±50 gr/m²
 Total Weight: 1380±50 gr/m²
 Total Thickness: 6-7±0.5 mm
 Width: Up to 400 cm

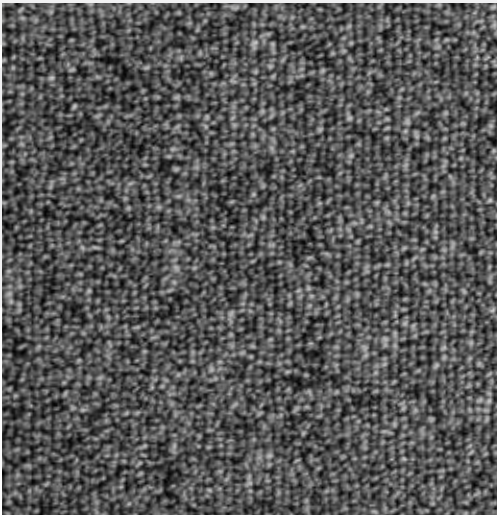


Tufted Loop Carpet
BABILLON PRO

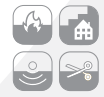


TECHNICAL SPECIFICATION

Structure: Loop
 Pile Material: Polyester
 Gauge: 1/10
 Type: Solution Dyed
 Pile High: 4±0.5 mm
 Pile Weight: 190±50 gr/m²
 Total Weight: 1260±50 gr/m²
 Total Thickness: 6-7±0.5 mm
 Width: Up to 400 cm



Tufted Loop Carpet
VEGAS PRO



TECHNICAL SPECIFICATION

Structure: Loop

Pile Material: Polyester

Gauge: 1/10

Type: Solution Dyed

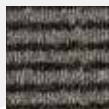
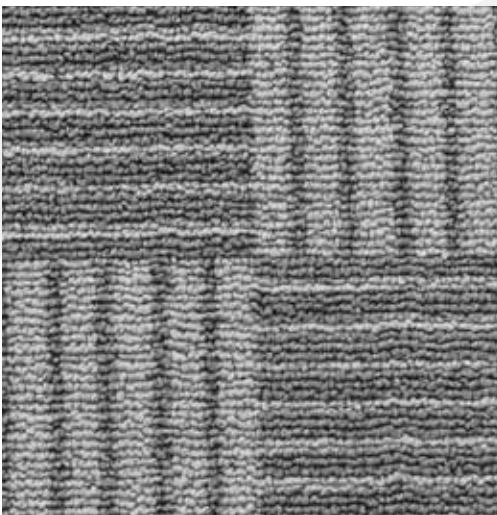
Pile High: 4±0.5 mm

Pile Weight: 290±50 gr/m²

Total Weight: 1380±50 gr/m²

Total Thickness: 7-8±0.5 mm

Width: Up to 400 cm



Tufted Loop Carpet
AYSU PLUS



TECHNICAL SPECIFICATION

Structure: Loop

Pile Material: Polyamide

Gauge: 1/10

Type: Chromojet Printed Carpet

Pile High: 4±0.5 mm

Pile Weight: 400±50 gr/m²

Total Weight: 1450±50 gr/m²

Total Thickness: 7-8±0.5 mm

Width: Up to 400 cm





Tufted Cut Carpet

CENTRAL



TECHNICAL SPECIFICATION

Structure: Cut

Pile Material: Polypropylene

Gauge: 5/32

Type: Solution Dyed

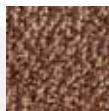
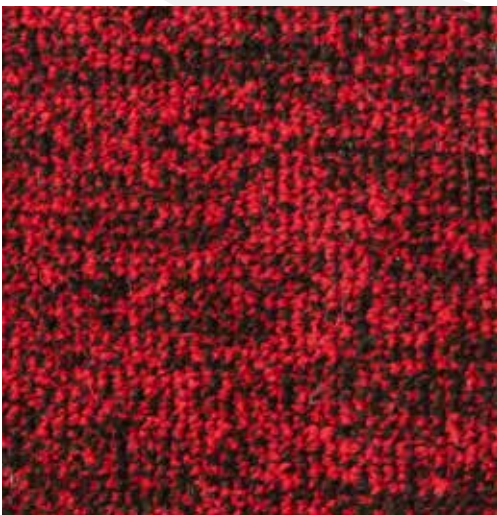
Pile High: 6±0.5 mm

Pile Weight: 600±50 gr/m²

Total Weight: 1600±50 gr/m²

Total Thickness: 10-11±0.5 mm

Width: Up to 400 cm



Tufted Cut Carpet

ISTANBUL



TECHNICAL SPECIFICATION

Structure: Cut

Pile Material: Polypropylene

Gauge: 1/10

Type: Solution Dyed

Pile High: 6±0.5 mm

Pile Weight: 650±50 gr/m²

Total Weight: 1660±50 gr/m²

Total Thickness: 9-10±0.5 mm

Width: Up to 400 cm



Tufted Cut Carpet

NOYAN



TECHNICAL SPECIFICATION

Structure: Cut

Pile Material: Polypropylene

Gauge: 5/32

Type: Solution Dyed

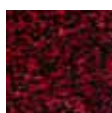
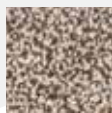
Pile High: 6±0.5 mm

Pile Weight: 600±50 gr/m²

Total Weight: 1550±50 gr/m²

Total Thickness: 10-11±0.5 mm

Width: Up to 400 cm

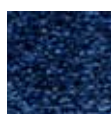
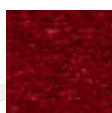
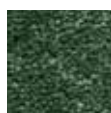


Tufted Cut Carpet
ROYAL CLASSIC



TECHNICAL SPECIFICATION

- Structure: Cut
- Pile Material: Polypropylene
- Gauge: 1/8
- Type: Solution Dyed
- Pile High: 10±0.5 mm
- Pile Weight: 850±50 gr/m²
- Total Weight: 1900±50 gr/m²
- Total Thickness: 12-13±0.5 mm
- Width: Up to 400 cm

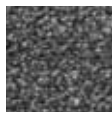
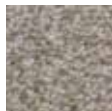


Tufted Cut Carpet
ROYAL



TECHNICAL SPECIFICATION

- Structure: Cut
- Pile Material: Polypropylene
- Gauge: 1/8
- Type: Solution Dyed
- Pile High: 10±0.5 mm
- Pile Weight: 850±50 gr/m²
- Total Weight: 1900±50 gr/m²
- Total Thickness: 12-13±0.5 mm
- Width: Up to 400 cm



Tufted Cut Carpet

MARINA



CUT



TECHNICAL SPECIFICATION

Structure: Cut

Pile Material: Polypropylene

Gauge: 5/32

Type: Solution Dyed

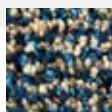
Pile High: 9±0.5 mm

Pile Weight: 780-900±50 gr/m²

Total Weight: 1800-2000±50 gr/m²

Total Thickness: 11-12±0.5 mm

Width: Up to 400 cm



Tufted Cut Carpet

SYDNEY



CUT



TECHNICAL SPECIFICATION

Structure: Cut

Pile Material: Polypropylene

Gauge: 5/32

Type: Solution Dyed

Pile High: 18±0.5 mm

Pile Weight: 1200-1300±50 gr/m²

Total Weight: 2200-2400±50 gr/m²

Total Thickness: 21-22±0.5 mm

Width: Up to 400 cm



Tufted Cut Carpet

SHAYLI



CUT



TECHNICAL SPECIFICATION

Structure: Loop

Pile Material: Polypropylene

Gauge: 5/16

Type: Solution Dyed

Pile High: 35±0.5 mm

Pile Weight: 1700±50 gr/m²

Total Weight: 2845±50 gr/m²

Total Thickness: 24-25±0.5 mm

Width: Up to 400 cm



Tufted Cut Carpet
BRIGHTON



TECHNICAL SPECIFICATION

Structure: Cut

Pile Material: Polypropylene

Gauge: 5/32

Type: Solution Dyed

Pile High: 18±0.5 mm

Pile Weight: 1300±50 gr/m²

Total Weight: 2300±50 gr/m²

Total Thickness: 20-21±0.5 mm

Width: Up to 400 cm



Tufted Cut Carpet
HERMES



TECHNICAL SPECIFICATION

Structure: Cut

Pile Material: Polypropylene

Gauge: 1/10

Type: Solution Dyed

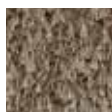
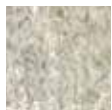
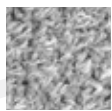
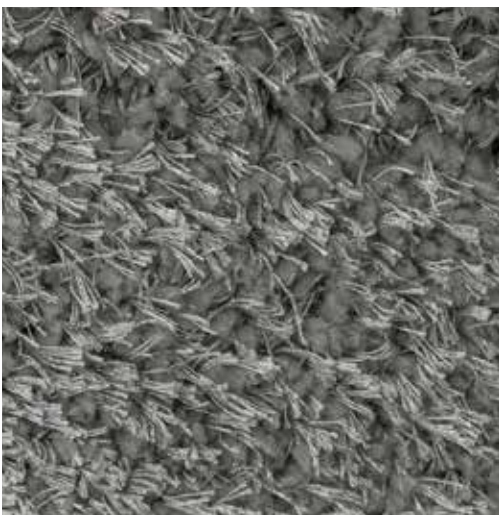
Pile High: 18±0.5 mm

Pile Weight: 2000±50 gr/m²

Total Weight: 2850±50 gr/m²

Total Thickness: 21-22±0.5 mm

Width: Up to 400 cm



Tufted Cut Carpet
ELEGANCE



TECHNICAL SPECIFICATION

Structure: Cut

Pile Material: Polyester

Gauge: 5/16

Type: Solution Dyed

Pile High: 35±0.5 mm

Pile Weight: 1300±50 gr/m²

Total Weight: 2500±50 gr/m²

Total Thickness: 23-24±0.5 mm

Width: Up to 400 cm



Tufted Cut Carpet
UNIQUE



TECHNICAL SPECIFICATION

Structure: Cut

Pile Material: Polyester

Gauge: 1/10

Type: Solution Dyed

Pile High: 18±0.5 mm

Pile Weight: 2100±50 gr/m²

Total Weight: 3000±50 gr/m²

Total Thickness: 20-21±0.5 mm

Width: Up to 300 cm



Tufted Cut Carpet
NICE



TECHNICAL SPECIFICATION

Structure: Cut

Pile Material: Polyester

Gauge: 1/10

Type: Solution Dyed

Pile High: 7-9±0.5 mm

Pile Weight: 700-900±50 gr/m²

Total Weight: 1800-2000±50 gr/m²

Total Thickness: 9-11±0.5 mm

Width: Up to 400 cm



Tufted Cut Carpet
NAHAL



TECHNICAL SPECIFICATION

Structure: Cut

Pile Material: Polyester

Gauge: 5/32

Type: Chromojet Printed Carpet

Pile High: 6-8±0.5 mm

Pile Weight: 500-900±50 gr/m²

Total Weight: 1400-1800±50 gr/m²

Total Thickness: 9-11±0.5 mm

Width: Up to 400 cm



Tufted Cut Carpet
ELGOLI



TECHNICAL SPECIFICATION

Structure: Cut

Pile Material: Polyester

Gauge: 5/32

Type: Chromojet Printed Carpet

Pile High: 6-8±0.5 mm

Pile Weight: 500-900±50 gr/m²

Total Weight: 1400-1800±50 gr/m²

Total Thickness: 9-11±0.5 mm

Width: Up to 400 cm



Tufted Cut Carpet
HARAZ



TECHNICAL SPECIFICATION

Structure: Cut

Pile Material: Polyester

Gauge: 5/32

Type: Chromojet Printed Carpet

Pile High: 6-8±0.5 mm

Pile Weight: 500-900±50 gr/m²

Total Weight: 1400-1800±50 gr/m²

Total Thickness: 9-11±0.5 mm

Width: Up to 400 cm



Tufted Cut Carpet

NIKAN



CUT



PRINTED



TECHNICAL SPECIFICATION

Structure: Cut

Pile Material: Polyester

Gauge: 5/32

Type: Chromojet Printed Carpet

Pile High: 6-8±0.5 mm

Pile Weight: 500-900±50 gr/m²

Total Weight: 1400-1800±50 gr/m²

Total Thickness: 9-11±0.5 mm

Width: Up to 400 cm



Tufted Cut Carpet

RAASH



CUT



PRINTED



TECHNICAL SPECIFICATION

Structure: Cut

Pile Material: Polyester

Gauge: 5/32

Type: Chromojet Printed Carpet

Pile High: 6-8±0.5 mm

Pile Weight: 500-900±50 gr/m²

Total Weight: 1400-1800±50 gr/m²

Total Thickness: 9-11±0.5 mm

Width: Up to 400 cm



Tufted Cut Carpet

KIYAN



CUT



PRINTED



TECHNICAL SPECIFICATION

Structure: Cut

Pile Material: Polyester

Gauge: 5/32

Type: Chromojet Printed Carpet

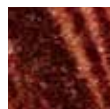
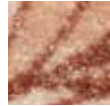
Pile High: 6-8±0.5 mm

Pile Weight: 500-900±50 gr/m²

Total Weight: 1400-1800±50 gr/m²

Total Thickness: 9-11±0.5 mm

Width: Up to 400 cm



Tufted Cut Carpet

HASTI



CUT



PRINTED



TECHNICAL SPECIFICATION

Structure: Cut

Pile Material: Polyester

Gauge: 5/32

Type: Chromojet Printed Carpet

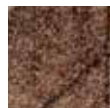
Pile High: 6-8±0.5 mm

Pile Weight: 500-900±50 gr/m²

Total Weight: 1400-1800±50 gr/m²

Total Thickness: 9-11±0.5 mm

Width: Up to 400 cm



Tufted Cut Carpet

TERMO



CUT



PRINTED



TECHNICAL SPECIFICATION

Structure: Cut

Pile Material: Polyester

Gauge: 5/32

Type: Chromojet Printed Carpet

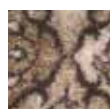
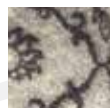
Pile High: 6-8±0.5 mm

Pile Weight: 500-900±50 gr/m²

Total Weight: 1400-1800±50 gr/m²

Total Thickness: 9-11±0.5 mm

Width: Up to 400 cm



Tufted Cut Carpet

KASHAN



CUT



PRINTED



TECHNICAL SPECIFICATION

Structure: Cut

Pile Material: Polyester

Gauge: 5/32

Type: Chromojet Printed Carpet

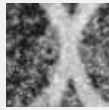
Pile High: 6-8±0.5 mm

Pile Weight: 500-900±50 gr/m²

Total Weight: 1400-1800±50 gr/m²

Total Thickness: 9-11±0.5 mm

Width: Up to 400 cm



Tufted Cut Carpet
VIOLET



TECHNICAL SPECIFICATION

Structure: Cut

Pile Material: Polyester

Gauge: 5/32

Type: Chromojet Printed Carpet

Pile High: 6-8±0.5 mm

Pile Weight: 500-900±50 gr/m²

Total Weight: 1400-1800±50 gr/m²

Total Thickness: 9-11±0.5 mm

Width: Up to 400 cm



Tufted Cut Carpet
MILAN



TECHNICAL SPECIFICATION

Structure: Cut

Pile Material: Polyester

Gauge: 5/32

Type: Chromojet Printed Carpet

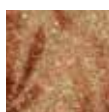
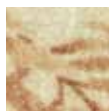
Pile High: 6-8±0.5 mm

Pile Weight: 500-900±50 gr/m²

Total Weight: 1400-1800±50 gr/m²

Total Thickness: 9-11±0.5 mm

Width: Up to 400 cm



Tufted Cut Carpet
MANA



TECHNICAL SPECIFICATION

Structure: Cut

Pile Material: Polyester

Gauge: 5/32

Type: Chromojet Printed Carpet

Pile High: 6-8±0.5 mm

Pile Weight: 500-900±50 gr/m²

Total Weight: 1400-1800±50 gr/m²

Total Thickness: 9-11±0.5 mm

Width: Up to 400 cm



Tufted Cut Carpet
PARMIS



TECHNICAL SPECIFICATION

Structure: Cut

Pile Material: Polyester

Gauge: 5/32

Type: Chromojet Printed Carpet

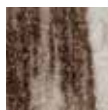
Pile High: 6-8±0.5 mm

Pile Weight: 500-900±50 gr/m²

Total Weight: 1400-1800±50 gr/m²

Total Thickness: 9-11±0.5 mm

Width: Up to 400 cm



Tufted Cut Carpet
MELANIA



TECHNICAL SPECIFICATION

Structure: Cut

Pile Material: Polyester

Gauge: 5/32

Type: Chromojet Printed Carpet

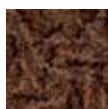
Pile High: 6-8±0.5 mm

Pile Weight: 500-900±50 gr/m²

Total Weight: 1400-1800±50 gr/m²

Total Thickness: 9-11±0.5 mm

Width: Up to 400 cm



Tufted Cut Carpet
KARIZ



TECHNICAL SPECIFICATION

Structure: Cut

Pile Material: Polyester

Gauge: 5/32

Type: Chromojet Printed Carpet

Pile High: 6-8±0.5 mm

Pile Weight: 500-900±50 gr/m²

Total Weight: 1400-1800±50 gr/m²

Total Thickness: 9-11±0.5 mm

Width: Up to 400 cm



Tufted Cut Carpet

ARNIK



CUT



PRINTED



TECHNICAL SPECIFICATION

Structure: Cut

Pile Material: Polyester

Gauge: 5/32

Type: Chromojet Printed Carpet

Pile High: 6-8±0.5 mm

Pile Weight: 500-900±50 gr/m²

Total Weight: 1400-1800±50 gr/m²

Total Thickness: 9-11±0.5 mm

Width: Up to 400 cm



Tufted Cut Carpet

ELENA



CUT



PRINTED



TECHNICAL SPECIFICATION

Structure: Cut

Pile Material: Polyester

Gauge: 5/32

Type: Chromojet Printed Carpet

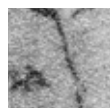
Pile High: 6-8±0.5 mm

Pile Weight: 500-900±50 gr/m²

Total Weight: 1400-1800±50 gr/m²

Total Thickness: 9-11±0.5 mm

Width: Up to 400 cm



Tufted Cut Carpet

OPAL



CUT



PRINTED



TECHNICAL SPECIFICATION

Structure: Cut

Pile Material: Polyester

Gauge: 5/32

Type: Chromojet Printed Carpet

Pile High: 6-8±0.5 mm

Pile Weight: 500-900±50 gr/m²

Total Weight: 1400-1800±50 gr/m²

Total Thickness: 9-11±0.5 mm

Width: Up to 400 cm



Tufted Cut Carpet

MIKHAK



CUT



PRINTED



TECHNICAL SPECIFICATION

Structure: Cut

Pile Material: Polyester

Gauge: 5/32

Type: Chromojet Printed Carpet

Pile High: 6-8±0.5 mm

Pile Weight: 500-900±50 gr/m²

Total Weight: 1400-1800±50 gr/m²

Total Thickness: 9-11±0.5 mm

Width: Up to 400 cm



Tufted Cut Carpet

MONACO



CUT



PRINTED



TECHNICAL SPECIFICATION

Structure: Cut

Pile Material: Polyester

Gauge: 5/32

Type: Chromojet Printed Carpet

Pile High: 6-8±0.5 mm

Pile Weight: 500-900±50 gr/m²

Total Weight: 1400-1800±50 gr/m²

Total Thickness: 9-11±0.5 mm

Width: Up to 400 cm



Tufted Cut Carpet

NILA



CUT



PRINTED



TECHNICAL SPECIFICATION

Structure: Cut

Pile Material: Polyester

Gauge: 5/32

Type: Chromojet Printed Carpet

Pile High: 6-8±0.5 mm

Pile Weight: 500-900±50 gr/m²

Total Weight: 1400-1800±50 gr/m²

Total Thickness: 9-11±0.5 mm

Width: Up to 400 cm



Tufted Cut Carpet
GUCCI



TECHNICAL SPECIFICATION

Structure: Cut

Pile Material: Polyamide

Gauge: 1/10

Type: Chromojet Printed Carpet

Pile High: 7±0.5 mm

Pile Weight: 650±50 gr/m²

Total Weight: 1550-1750±50 gr/m²

Total Thickness: 9-10±0.5 mm

Width: Up to 400 cm



Tufted Cut Carpet
CHANEL



TECHNICAL SPECIFICATION

Structure: Cut

Pile Material: Polyamide

Gauge: 1/10

Type: Chromojet Printed Carpet

Pile High: 7±0.5 mm

Pile Weight: 650±50 gr/m²

Total Weight: 1550-1750±50 gr/m²

Total Thickness: 9-10±0.5 mm

Width: Up to 400 cm



Tufted Cut Carpet
PRESTIGE



TECHNICAL SPECIFICATION

Structure: Cut

Pile Material: Polyamide

Gauge: 1/10

Type: Chromojet Printed Carpet

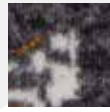
Pile High: 7±0.5 mm

Pile Weight: 650±50 gr/m²

Total Weight: 1800±50gr/m²

Total Thickness: 9-10±0.5 mm

Width: Up to 400 cm



Tufted Cut Carpet
VENICE



TECHNICAL SPECIFICATION

Structure: Cut

Pile Material: Polyamide

Gauge: 1/8

Type: Chromojet Printed Carpet

Pile High: 5±0.5 mm

Pile Weight: 600±50 gr/m²

Total Weight: 1500±50 gr/m²

Total Thickness: 7-8±0.5 mm

Width: Up to 400 cm



Tufted Cut Carpet
IHAN



TECHNICAL SPECIFICATION

Structure: Cut

Pile Material: Polyamide

Gauge: 1/8

Type: Chromojet Printed Carpet

Pile High: 5±0.5 mm

Pile Weight: 600±50 gr/m²

Total Weight: 1500±50 gr/m²

Total Thickness: 7-8±0.5 mm

Width: Up to 400 cm



Tufted Cut Carpet
AVENZA



TECHNICAL SPECIFICATION

Structure: Cut

Pile Material: Polyamide

Gauge: 1/10

Type: Chromojet Printed Carpet

Pile High: 6±0.5 mm

Pile Weight: 600±50 gr/m²

Total Weight: 1550±50 gr/m²

Total Thickness: 8-9±0.5 mm

Width: Up to 400 cm



We export world wide just tell us what you need, where you need it, when you need it, and in what quantity.

FROM
CONCEPT
TO
DESTINATION
TELL
US
YOUR
REQUIREMENTS,
AND
WE DELIVER
WITHOUT
LIMITS.



ZarifCarpets

CONTACT US

 Negin-E-Zayandeh Rood Bldg
1St Moshtagh Ave., Isfahan, Iran

 +98 31 38350000

 +98 913 447 4359

 zarifcarpetsarabic (Arabic)

 zarifcarpetexport

 zarifmosavar (Afghanistan)

 zarif-carpets

